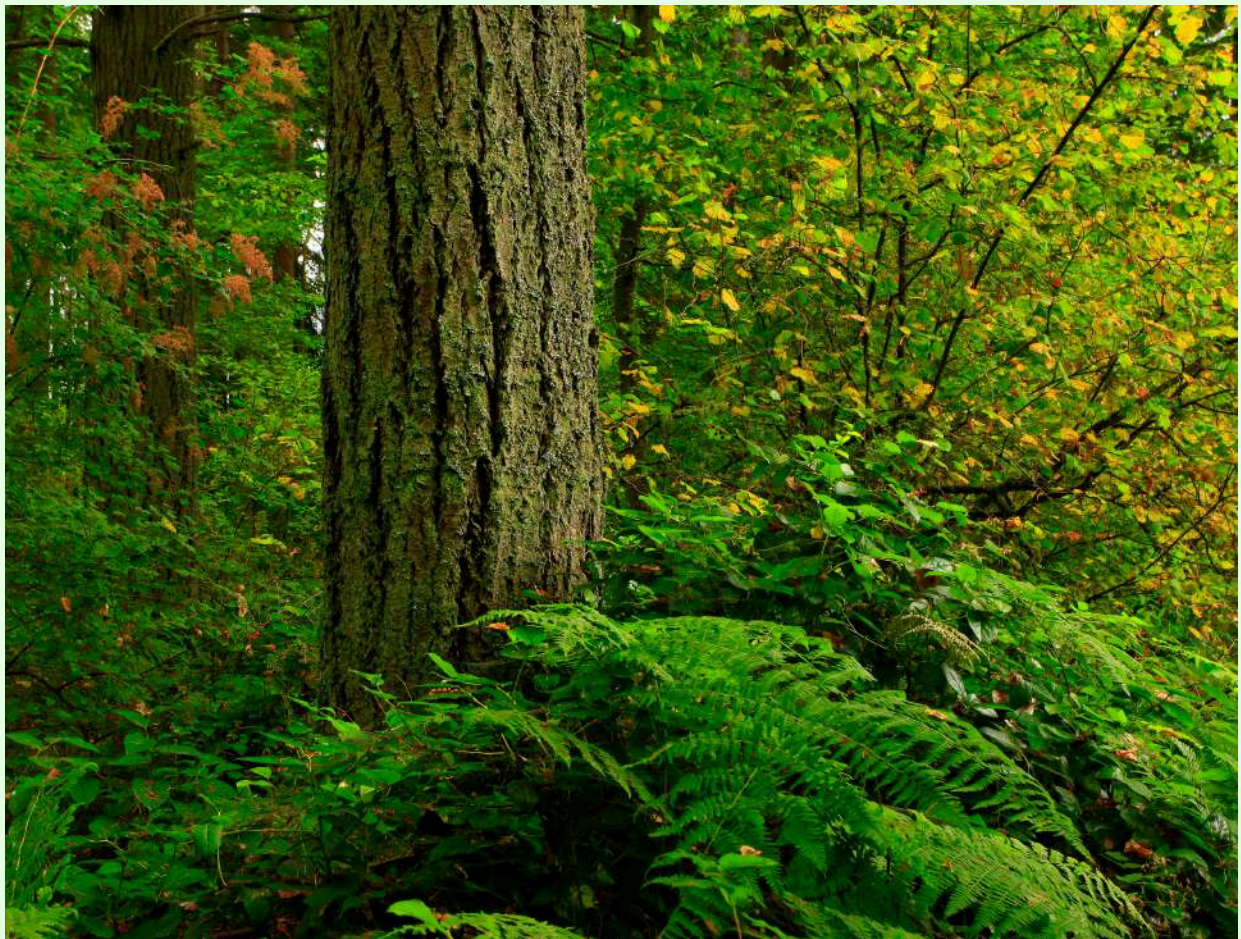


# Elkton Community Education Center Native Plant Catalog

**Featuring Pacific Northwest Native  
Groundcovers, Milkweed, Shrubs, and Trees**



Elkton Community Education Center  
15850 State Hwy 38W  
Elkton, OR

[www.elktonbutterflies.com](http://www.elktonbutterflies.com) | (541) 584-2692 | [info@elktonbutterflies.com](mailto:info@elktonbutterflies.com)

# Welcome to Elkton Community Education Center's Native Plant Catalog

The Elkton Community Education Center (ECEC) is committed to promoting environmental stewardship and education through the propagation and sale of native trees, shrubs, milkweed and groundcovers at our 43-acre site in Elkton, Oregon. This catalog showcases our carefully curated selection of native plants, designed to enhance local ecosystems, support biodiversity, and provide sustainable landscaping options for gardeners, homeowners, conservationists, and restoration projects.

## Table of Contents

Native Groundcovers.....Pages 4-8

Native Milkweed.....Pages 9-11

Native Shrubs.....Pages 12-42

Native Trees.....Pages 43-61



### **Ordering and Contact Information**

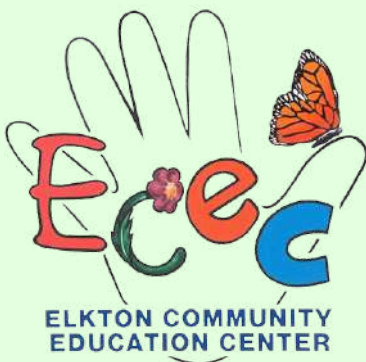
- *Phone:* (541) 584-2692
- *Visit our site:* 15850 State Hwy 38W  
Elkton, OR 97436
- *Email:* [info@elktonbutterflies.com](mailto:info@elktonbutterflies.com)
- *On the web:* [www.elktonbutterflies.com](http://www.elktonbutterflies.com)

# Understanding our Plant Categories

At ECEC, we categorize plants into Groundcovers, Milkweed, Shrubs, and Trees based on growth habit, mature size, and ecological role in Pacific Northwest landscapes. This helps you select plants for specific needs, like soil coverage or canopy shade. Note that some plants (e.g., Red Osier Dogwood) can blur lines depending on conditions—we classify them by typical form for practical use.

- **Groundcovers:** Low-growing (<3 ft), spreading plants for soil protection, erosion control, and pollinator habitat (e.g., Kinnikinnick).
- **Milkweed:** Specialized perennials for monarch support, with groundcover-like traits (e.g., Narrow Leaf Milkweed).
- **Shrubs:** Multi-stemmed woody plants (3-20 ft) for mid-layer structure, berries, and wildlife shelter (e.g., American Cranberry Bush).
- **Trees:** Tall, single-trunked plants (>20 ft) for shade, carbon storage, and upper habitat (e.g., Big Leaf Maple).

Why shrubs over trees? Shrubs like Red Osier Dogwood stay multi-stemmed and compact in our region, fitting shrub roles despite tree-like potential.

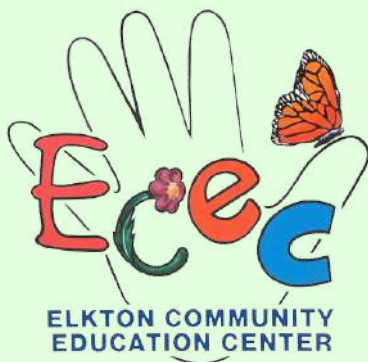




# ECEC Native Plant Catalog:

## Native Groundcovers

Groundcovers are low-growing plants that spread across the soil surface, providing a natural carpet in gardens or natural areas. They are essential in environments for preventing soil erosion, retaining moisture, and suppressing weeds, making them key for sustainable landscaping. Groundcovers contribute to biodiversity by creating habitats for small insects and animals, supporting pollinators with their flowers and foliage. In the Pacific Northwest, they play a role in ecosystem restoration, such as stabilizing slopes in rain gardens or understory layers in forests. Many species offer cultural significance, like edible parts or medicinal uses in Indigenous traditions.



### **Ordering and Contact Information**

- *Phone:* (541) 584-2692
- *Visit our site:* 15850 State Hwy 38W  
Elkton, OR 97436
- *Email:* [info@elktonbutterflies.com](mailto:info@elktonbutterflies.com)
- *On the web:* [www.elktonbutterflies.com](http://www.elktonbutterflies.com)

# Kinnickinnick

(*Arctostaphylos uva-ursi*)



Full sun to partial shade | Well-drained, sandy or rocky soil; pH 4.5-6.5

Kinnickinnick, also known as bearberry, is a low-growing evergreen groundcover native to the Pacific Northwest. Its glossy green leaves and pink-white flowers add year-round beauty, while its red berries attract wildlife. This hardy plant is ideal for erosion control on slopes and thrives in poor soils. It's a favorite for native landscaping and xeriscaping projects.

## Ecological Benefits:

- Provides food for birds and small mammals
- Pollinator Friendly
- Highly deer resistant
- Drought Tolerant once established
- Stabilizes soil on slopes

Height: 6-12 inches  
Spread: 3-6 feet



**1-Gallon Pot: \$15 | 4-inch Pot: \$5 (check availability)**



15850 State Hwy 38W, Elkton, OR

[www.elktonbutterflies.com](http://www.elktonbutterflies.com) | (541) 584-2692 | [info@elktonbutterflies.com](mailto:info@elktonbutterflies.com)

# Sword Fern

*(Polystichum munitum)*



Partial to full shade | Moist, well-drained, organic-rich soil; pH 5.0-6.5

Sword Fern is a robust evergreen groundcover native to the Pacific Northwest, known for its lush, dark green fronds. This fern thrives in shaded forests, making it perfect for woodland gardens or understory planting. Its dense foliage provides year-round interest and is ideal for erosion control. Sword Fern is a low-maintenance staple for native landscapes.

## Ecological Benefits:

- Provides cover for small wildlife
- Supports ecosystem diversity
- Highly deer resistant
- Moderately drought tolerant once established
- Stabilizes soil in shaded areas
- Enhances forest understory ecosystems



Height: 2-4 feet

Spread: 2-4 feet

**1-Gallon Pot: \$15**



15850 State Hwy 38W, Elkton, OR

[www.elktonbutterflies.com](http://www.elktonbutterflies.com) | (541) 584-2692 | [info@elktonbutterflies.com](mailto:info@elktonbutterflies.com)



# Wild Ginger

(*Asarum caudatum*)



Full to partial shade | Moist, well-drained, organic-rich soil; pH 5.0-6.5

Wild Ginger is a low-growing native groundcover of the Pacific Northwest, prized for its heart-shaped leaves and hidden maroon flowers. Its aromatic roots and lush foliage make it ideal for shaded woodland gardens. This plant thrives in moist conditions, perfect for understory planting or erosion control. Its subtle beauty adds charm to native landscapes.

## Ecological Benefits:

- Provides cover for small wildlife
- Pollinator Friendly, attracting specialized pollinators
- Moderately deer resistant
- Stabilizes soil in shaded areas
- Enhances forest understory biodiversity



Height: 6-12 inches  
Spread: 1-2 feet

**1-Gallon Pot: \$15 | 4-inch Pot \$5 (check availability)**



15850 State Hwy 38W, Elkton, OR

[www.elktonbutterflies.com](http://www.elktonbutterflies.com) | (541) 584-2692 | [info@elktonbutterflies.com](mailto:info@elktonbutterflies.com)

# Yerba Buena

(*Clinopodium douglasii*)



Full to partial shade | Moist, well-drained, loamy soil; pH 5.5-7.0

Yerba Buena is a fragrant, low-growing native perennial of the Pacific Northwest, known for its aromatic leaves and delicate flowers. Its trailing stems make it an excellent groundcover for shaded gardens or woodland restoration. Traditionally used for teas, it adds both ecological and cultural value to landscapes.

## Ecological Benefits:

- Provides nectar for bees and butterflies
- Pollinator Friendly
- Moderately deer resistant
- Drought tolerant once established
- Stabilizes soil in shaded areas
- Enhances woodland biodiversity



Height: 1.5-6 inches

Spread: 1-3 feet



**1-Gallon Pot: \$15 | 4-inch Pot \$5 (check availability)**

15850 State Hwy 38W, Elkton, OR

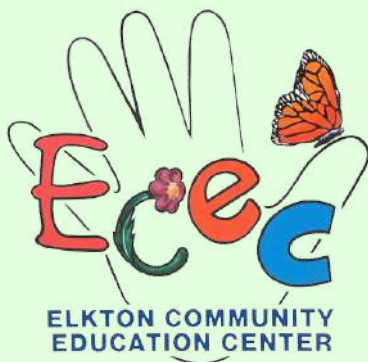
[www.elktonbutterflies.com](http://www.elktonbutterflies.com) | (541) 584-2692 | [info@elktonbutterflies.com](mailto:info@elktonbutterflies.com)



# ECEC Native Plant Catalog:

## Milkweed

Milkweed species are perennial herbs essential for monarch butterflies, serving as host plants for their caterpillars and nectar sources for adults. They are important in environments for supporting pollinator migration and restoring degraded habitats, particularly in meadows or roadsides. Milkweed contributes to biodiversity by attracting a variety of insects, including bees and other butterflies, fostering food webs in ecosystems. In the Pacific Northwest, they aid in conservation efforts for declining monarch populations and can be used in educational gardens to highlight pollination and wildlife support.



### **Ordering and Contact Information**

- *Phone:* (541) 584-2692
- *Visit our site:* 15850 State Hwy 38W  
Elkton, OR 97436
- *Email:* [info@elktonbutterflies.com](mailto:info@elktonbutterflies.com)
- *On the web:* [www.elktonbutterflies.com](http://www.elktonbutterflies.com)

# Narrow Leaf Milkweed

*Asclepias fascicularis*



Full sun to partial shade | Well-drained soils; tolerates sandy or clay soils; pH 6.0–7.0

Narrowleaf Milkweed is a hardy perennial native to the western United States, valued for its slender leaves and clusters of fragrant, pale pink to lavender blooms. This drought-tolerant plant is a critical host for monarch butterfly caterpillars and attracts a wide variety of pollinators. It's ideal for meadow plantings, pollinator gardens, and habitat restoration projects.

## Ecological Benefits:

- Host plant for monarch butterfly caterpillars
- Pollinator Friendly
- Moderately deer resistant
- Drought tolerant once established
- Supports native insect biodiversity



Height: 1-3 feet  
Spread: 1-2 feet

**1-Gallon Pot: \$15 | 4-inch Pot \$5 (check availability)**



15850 State Hwy 38W, Elkton, OR

[www.elktonbutterflies.com](http://www.elktonbutterflies.com) | (541) 584-2692 | [info@elktonbutterflies.com](mailto:info@elktonbutterflies.com)

# Showy Milkweed

(*Asclepias speciosa*)



Full sun | Well-drained soils; tolerates sandy, loamy, or clay soils; pH 6.0–7.5

Showy Milkweed is a striking native perennial, recognized for its broad, velvety leaves and large clusters of star-shaped pink to purplish flowers. A vital host for monarch butterfly caterpillars, it also provides abundant nectar for bees, butterflies, and hummingbirds. Thriving in sunny, open spaces, it's perfect for pollinator gardens, roadsides, and restoration sites.

## Ecological Benefits:

- Host plant for monarch butterfly caterpillars
- Pollinator Friendly
- Moderately deer resistant
- Moderately drought tolerant once established
- Supports monarch migration and native biodiversity



Height: 2-4 feet  
Spread: 1-3 feet

**1-Gallon Pot: \$15 | 4-inch Pot \$5 (check availability)**

15850 State Hwy 38W, Elkton, OR

[www.elktonbutterflies.com](http://www.elktonbutterflies.com) | (541) 584-2692 | [info@elktonbutterflies.com](mailto:info@elktonbutterflies.com)

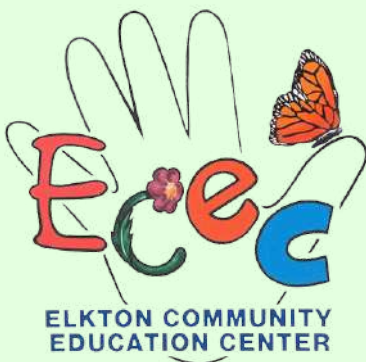




# ECEC Native Plant Catalog:

## Shrubs

Shrubs are woody plants with multiple stems, typically 3-20 feet tall, serving as mid-level vegetation in ecosystems. They are important in environments for providing erosion control, windbreaks, and habitat layers, bridging groundcovers and trees. Shrubs contribute to biodiversity by offering nectar, berries, and shelter to pollinators, birds, and mammals, fostering complex food webs. In the Pacific Northwest, they support wildlife corridors and cultural uses (e.g., berries for food, bark for medicine), while aiding in wildfire resilience and water filtration in riparian zones.



### **Ordering and Contact Information**

- *Phone:* (541) 584-2692
- *Visit our site:* 15850 State Hwy 38W  
Elkton, OR 97436
- *Email:* [info@elktonbutterflies.com](mailto:info@elktonbutterflies.com)
- *On the web:* [www.elktonbutterflies.com](http://www.elktonbutterflies.com)

# American Cranberry Bush

(*Viburnum opulus* var. *americanum*)



Full sun to partial shade | Moist, well-drained, loamy soil; pH 5.5-7.0

American Cranberry Bush is a vibrant native shrub of the Pacific Northwest, prized for its white flower clusters and bright red berries. Its edible berries attract wildlife and can be used for jellies. Ideal for wetland edges or mixed borders, this shrub thrives in moist soils, adding seasonal color and ecological benefits.

## Ecological Benefits:

- Provides food for birds via berries
- Pollinator Friendly
- Moderately deer resistant
- Supports wetland ecosystems
- Enhances biodiversity

Height: 6-12 feet  
Spread: 6-12 feet



**1-Gallon Pot: \$15 | 4-inch Pot \$5 (check availability)**

15850 State Hwy 38W, Elkton, OR

[www.elktonbutterflies.com](http://www.elktonbutterflies.com) | (541) 584-2692 | [info@elktonbutterflies.com](mailto:info@elktonbutterflies.com)

## Blue Elderberry

(*Sambucus cerulea*)



Full sun to partial shade | Well-drained, loamy soil; pH 6.0-7.5

Blue Elderberry is a robust native shrub of the Pacific Northwest, known for its creamy white flower clusters and blue-black berries. Its berries are a favorite of birds and can be used for jams or wine. This shrub thrives in a variety of conditions, making it ideal for hedges or restoration projects. Its fast growth adds quick structure to landscapes.

### Ecological Benefits:

- Provides food for birds and mammals
- Pollinator Friendly
- Moderately deer resistant
- Drought tolerant once established
- Enhances riparian and woodland ecosystems



Height: 6-12 feet  
Spread: 6-10 feet



**1-Gallon Pot: \$15 | 4-inch Pot \$5 (check availability)**

15850 State Hwy 38W, Elkton, OR

[www.elktonbutterflies.com](http://www.elktonbutterflies.com) | (541) 584-2692 | [info@elktonbutterflies.com](mailto:info@elktonbutterflies.com)



# Blueblossom

(*Ceanothus thyrsiflorus*)



Full sun to partial shade | Well-drained, sandy or loamy soil; pH 6.0-7.5

Blueblossom, also known as Blue Blossom Ceanothus, is a vibrant native shrub of the Pacific Northwest, celebrated for its stunning blue flower clusters that bloom in spring. Its evergreen foliage and profuse blooms make it a standout in native gardens and restoration projects. This shrub thrives in coastal and inland settings, attracting pollinators and adding year-round beauty. It's ideal for hedges, slopes, or mixed shrub borders.

## Ecological Benefits:

- Provides nectar and habitat for native bees and butterflies
- Pollinator Friendly
- Highly deer resistant
- Drought tolerant once established
- Stabilizes soil on slopes and prevents erosion



Height: 6-20 feet

Spread: 6-15 feet

**1-Gallon Pot: \$15 | 4-inch Pot \$5 (check availability)**

15850 State Hwy 38W, Elkton, OR

[www.elktonbutterflies.com](http://www.elktonbutterflies.com) | (541) 584-2692 | [info@elktonbutterflies.com](mailto:info@elktonbutterflies.com)



# Cascara

(*Frangula purshiana*)



Partial shade to full sun | Moist, well-drained soil; pH 5.5-7.0

Cascara is a versatile native shrub or small tree of the Pacific Northwest, valued for its attractive foliage and black berries. Its bark has traditional medicinal uses, and its berries attract birds. This plant thrives in moist conditions, making it ideal for riparian restoration or woodland gardens. Its upright form adds structure to mixed landscapes.

## Ecological Benefits:

- Provides food for birds
- Pollinator Friendly
- Moderately deer resistant
- Moderately drought tolerant once established
- Supports riparian ecosystems
- Enhances biodiversity in woodland areas



Height: 10-30 feet  
Spread: 10-20 feet



**1-Gallon Pot: \$15 | 4-inch Pot \$5 (check availability)**

15850 State Hwy 38W, Elkton, OR

[www.elktonbutterflies.com](http://www.elktonbutterflies.com) | (541) 584-2692 | [info@elktonbutterflies.com](mailto:info@elktonbutterflies.com)

# Chinkapin

*(Chrysolepis chrysophylla)*



Full sun to partial shade | Well-drained, rocky or loamy soil; pH 5.5-7.0

Chinkapin, or Golden Chinkapin, is a versatile native shrub or small tree (depending on its environment and growing conditions) of the Pacific Northwest, known for its glossy evergreen leaves and spiky, edible nuts. Its dense foliage provides excellent wildlife cover, making it ideal for restoration projects or mixed borders. Thriving in well-drained soils, it adds year-round structure to landscapes.

## Ecological Benefits:

- Provides food for wildlife via nuts
- Pollinator Friendly, supporting native insects
- Moderately deer resistant
- Drought tolerant once established
- Supports forest understory ecosystems
- Enhances biodiversity



Height: 6-20 feet

Spread: 6-15 feet

**1-Gallon Pot: \$15 | 4-inch Pot \$5 (check availability)**



15850 State Hwy 38W, Elkton, OR

[www.elktonbutterflies.com](http://www.elktonbutterflies.com) | (541) 584-2692 | [info@elktonbutterflies.com](mailto:info@elktonbutterflies.com)



# Chokecherry

(*Prunus virginiana*)



Full sun to partial shade | Well-drained, loamy or sandy soil; pH 6.0-7.5

Chokecherry is a versatile native shrub or small tree of the Pacific Northwest, prized for its showy white flower clusters and dark purple-black cherries. Its tart, edible berries are a food source for wildlife and can be used for jams or jellies. This plant thrives in a variety of conditions, often forming thickets in the wild-- making it ideal for restoration projects, wildlife gardens, or mixed borders. Its vibrant fall foliage adds seasonal color to landscapes.

## Ecological Benefits:

- Provides food for birds and mammals
- Pollinator Friendly
- Moderately deer resistant
- Drought tolerant once established
- Supports wildlife with abundant fruit production
- Enhances biodiversity in woodland or open areas



Height: 6-20 feet

Spread: 6-15 feet

**1-Gallon Pot: \$15 | 4-inch Pot \$5 (check availability)**

15850 State Hwy 38W, Elkton, OR

[www.elktonbutterflies.com](http://www.elktonbutterflies.com) | (541) 584-2692 | [info@elktonbutterflies.com](mailto:info@elktonbutterflies.com)



# Coyote Brush

(*Baccharis pilularis*)



Full sun | Well-drained, sandy or rocky soil; pH 5.5-7.5

Coyote Brush is a tough native shrub of the Pacific Northwest, valued for its small white flowers and resilience in harsh conditions. Its dense foliage provides habitat for wildlife, making it ideal for coastal or dry landscapes. Thriving in sunny, well-drained soils, it's perfect for erosion control or low-maintenance gardens.

## Ecological Benefits:

- Provides nectar for bees and butterflies
- Pollinator Friendly
- Highly deer resistant
- Highly drought tolerant
- Stabilizes soil in coastal or dry areas
- Supports biodiversity with dense cover



Height: 3-8 feet

Spread: 4-10 feet



**1-Gallon Pot: \$15 | 4-inch Pot \$5 (check availability)**

15850 State Hwy 38W, Elkton, OR

[www.elktonbutterflies.com](http://www.elktonbutterflies.com) | (541) 584-2692 | [info@elktonbutterflies.com](mailto:info@elktonbutterflies.com)



# Douglas Spiraea

(*Spiraea douglasii*)



Full sun to partial shade | Moist, well-drained soil; pH 5.5-7.0

Douglas Spiraea is a striking native shrub of the Pacific Northwest, featuring dense clusters of pink flowers that bloom in summer. Its upright form and lush foliage make it a favorite for wetland restoration or garden borders. This shrub thrives in moist conditions, attracting pollinators and adding vibrant color. It's ideal for rain gardens or streamside plantings.

## Ecological Benefits:

- Provides nectar for bees and butterflies
- Pollinator Friendly
- Moderately deer resistant
- Stabilizes soil in riparian areas
- Enhances wetland ecosystems

Height: 4-7 feet  
Spread: 3-6 feet



**1-Gallon Pot: \$15 | 4-inch Pot \$5 (check availability)**

15850 State Hwy 38W, Elkton, OR

[www.elktonbutterflies.com](http://www.elktonbutterflies.com) | (541) 584-2692 | [info@elktonbutterflies.com](mailto:info@elktonbutterflies.com)



# Evergreen Huckleberry

(*Vaccinium ovatum*)



Partial shade to full sun | Well-drained, acidic soil; pH 4.5-6.0

Evergreen Huckleberry is a versatile native shrub of the Pacific Northwest, prized for its glossy evergreen leaves and sweet, dark berries. Its pink-white flowers attract pollinators, and its berries are a favorite of wildlife and humans. This shrub thrives in shaded or sunny areas, perfect for hedges or woodland gardens. Its year-round foliage adds structure to landscapes.

## Ecological Benefits:

- Provides food for birds and mammals
- Pollinator Friendly
- Moderately deer resistant
- Drought tolerant once established
- Supports woodland ecosystems
- Enhances pollinator habitats with spring blooms



Height: 2-8 feet

Spread: 3-6 feet



**1-Gallon Pot: \$15 | 4-inch Pot \$5 (check availability)**

15850 State Hwy 38W, Elkton, OR

[www.elktonbutterflies.com](http://www.elktonbutterflies.com) | (541) 584-2692 | [info@elktonbutterflies.com](mailto:info@elktonbutterflies.com)

# Goatsbeard

(*Aruncus dioicus*)



Partial to full shade | Moist, well-drained, organic-rich soil; pH 5.5-7.0

Goatsbeard is a graceful native shrub of the Pacific Northwest, known for its feathery white flower plumes and lush foliage. Its tall, arching form adds drama to shaded gardens or woodland edges. This plant thrives in moist conditions, making it ideal for rain gardens or streamside plantings. Its flowers attract pollinators, enhancing local ecosystems.

## Ecological Benefits:

- Provides nectar for bees and butterflies
- Pollinator Friendly
- Moderately deer resistant
- Enhances shaded woodland ecosystems
- Stabilizes soil in moist areas



Height: 3-6 feet  
Spread: 3-5 feet



**1-Gallon Pot: \$15 | 4-inch Pot \$5 (check availability)**

15850 State Hwy 38W, Elkton, OR

[www.elktonbutterflies.com](http://www.elktonbutterflies.com) | (541) 584-2692 | [info@elktonbutterflies.com](mailto:info@elktonbutterflies.com)

# Gray Willow

(*Salix glauca*)



Full sun to partial shade | Moist, well-drained soil; tolerates wet conditions; pH 5.5-7.5

Gray Willow is a hardy native shrub of the Pacific Northwest, known for its silvery leaves and yellow catkins. Its dense growth provides excellent wildlife cover, making it ideal for wetland or riparian restoration. Thriving in moist soils, it adds texture and ecological value to native landscapes.

## Ecological Benefits:

- Provides habitat for birds and small mammals
- Pollinator Friendly
- Moderately deer resistant
- Supports wetland ecosystems
- Stabilizes soil in riparian areas



Height: 3-10 feet  
Spread: 3-8 feet



**1-Gallon Pot: \$15 | 4-inch Pot \$5 (check availability)**

15850 State Hwy 38W, Elkton, OR

[www.elktonbutterflies.com](http://www.elktonbutterflies.com) | (541) 584-2692 | [info@elktonbutterflies.com](mailto:info@elktonbutterflies.com)



# Indian Plum

(*Oemleria cerasiformis*)



Partial shade to full sun | Well-drained, loamy soil; pH 5.5-7.0

Indian Plum is an early-blooming native large shrub/small tree of the Pacific Northwest, known for its white flowers and small, dark plums. One of the first shrubs to bloom in spring, it attracts early pollinators and provides food for wildlife. This plant thrives in a variety of conditions, ideal for woodland gardens or restoration projects. Its slender form adds elegance to mixed borders.

## Ecological Benefits:

- Provides food for birds and mammals
- Pollinator Friendly, attracts early-season bees
- Moderately deer resistant
- Drought tolerant once established
- Enhances woodland and riparian ecosystems

Height: 6-15 feet  
Spread: 5-10 feet



**1-Gallon Pot: \$15 | 4-inch Pot \$5 (check availability)**

15850 State Hwy 38W, Elkton, OR

[www.elktonbutterflies.com](http://www.elktonbutterflies.com) | (541) 584-2692 | [info@elktonbutterflies.com](mailto:info@elktonbutterflies.com)



# Mock Orange

(*Philadelphus lewisii*)

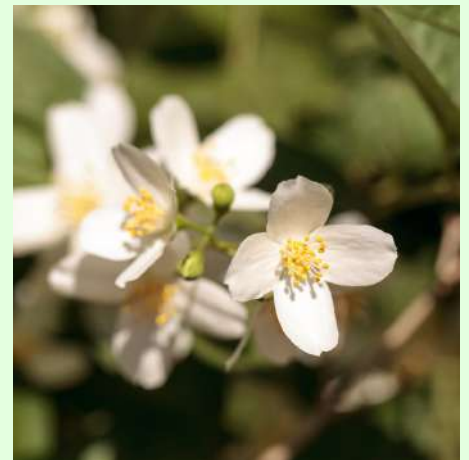


Full sun to partial shade | Well-drained, loamy soil; pH 6.0-7.5

Mock Orange is a delightful native shrub of the Pacific Northwest, celebrated for its fragrant white flowers that bloom in late spring. Its sweet scent and attractive foliage make it a favorite for garden borders or hedges. This shrub thrives in a variety of conditions, attracting pollinators and adding charm to landscapes. It's ideal for mixed shrub plantings or restoration projects.

## Ecological Benefits:

- Provides nectar for bees and butterflies
- Pollinator Friendly
- Moderately deer resistant
- Drought tolerant once established
- Enhances garden biodiversity



Height: 5-10 feet  
Spread: 4-8 feet

**1-Gallon Pot: \$15 | 4-inch Pot \$5 (check availability)**

15850 State Hwy 38W, Elkton, OR

[www.elktonbutterflies.com](http://www.elktonbutterflies.com) | (541) 584-2692 | [info@elktonbutterflies.com](mailto:info@elktonbutterflies.com)



# Oceanspray

(*Holodiscus discolor*)

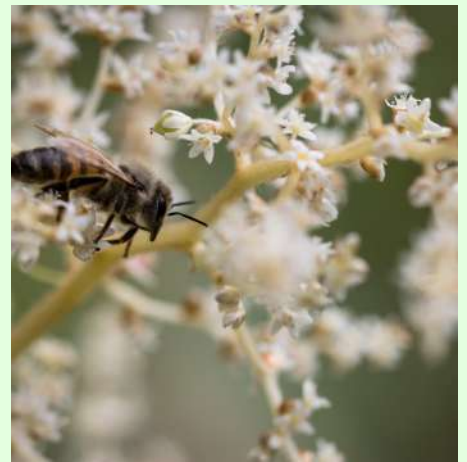


Full sun to partial shade | Well-drained, rocky or sandy soil; pH 6.0-7.5

Oceanspray is a graceful native shrub of the Pacific Northwest, known for its cascading creamy white flower plumes in summer. Its arching branches and delicate blooms make it a standout in native gardens or restoration projects. This shrub thrives in dry or rocky soils, ideal for slopes or mixed borders. Its flowers attract pollinators, enhancing local ecosystems.

## Ecological Benefits:

- Provides nectar for bees and butterflies
- Pollinator Friendly
- Moderately deer resistant
- Drought tolerant once established
- Stabilizes soil on slopes
- Enhances native garden biodiversity



Height: 4-10 feet  
Spread: 4-8 feet



**1-Gallon Pot: \$15 | 4-inch Pot \$5 (check availability)**

15850 State Hwy 38W, Elkton, OR

[www.elktonbutterflies.com](http://www.elktonbutterflies.com) | (541) 584-2692 | [info@elktonbutterflies.com](mailto:info@elktonbutterflies.com)



# Pacific Ninebark

(*Physocarpus capitatus*)



Full sun to partial shade | Moist, well-drained soil; pH 5.5-7.0

Pacific Ninebark is a versatile native shrub of the Pacific Northwest, known for its white flower clusters and attractive peeling bark. Its rounded form and red seed pods add visual interest to gardens or restoration sites. This shrub thrives in moist conditions, perfect for riparian areas or mixed borders. Its flowers and seeds support wildlife and pollinators.

## Ecological Benefits:

- Provides food and habitat for birds
- Pollinator Friendly
- Moderately deer resistant
- Moderately drought tolerant once established
- Stabilizes soil in riparian areas
- Enhances biodiversity in wetland ecosystems



Height: 6-12 feet

Spread: 6-10 feet

**1-Gallon Pot: \$15 | 4-inch Pot \$5 (check availability)**

15850 State Hwy 38W, Elkton, OR

[www.elktonbutterflies.com](http://www.elktonbutterflies.com) | (541) 584-2692 | [info@elktonbutterflies.com](mailto:info@elktonbutterflies.com)



# Pacific Wax Myrtle

(*Myrica californica*)



Full sun to partial shade | Well-drained, sandy or loamy soil; pH 6.0-7.5

Pacific Wax Myrtle is a versatile evergreen shrub native to the Pacific Northwest coast. Its glossy green leaves and waxy berries add year-round interest, while its aromatic foliage is a favorite in native gardens. This shrub thrives in coastal conditions and is ideal for hedges, windbreaks, or restoration projects. Its berries are a food source for wildlife, enhancing local ecosystems.

## Ecological Benefits:

- Provides food for birds
- Pollinator Friendly
- Moderately deer resistant
- Drought tolerant once established
- Supports coastal ecosystem stability
- Acts as a natural windbreak in exposed areas



Height: 10-30 feet  
Spread: 10-20 feet

**1-Gallon Pot: \$15 | 4-inch Pot \$5 (check availability)**

15850 State Hwy 38W, Elkton, OR

[www.elktonbutterflies.com](http://www.elktonbutterflies.com) | (541) 584-2692 | [info@elktonbutterflies.com](mailto:info@elktonbutterflies.com)



# Red Elderberry

(*Sambucus racemosa*)



Full sun to partial shade | Moist, well-drained soil; pH 5.5-7.0

Red Elderberry is a vibrant native shrub of the Pacific Northwest, known for its white flower clusters and bright red berries. Its berries attract birds, while its flowers draw pollinators, making it ideal for wildlife gardens. This shrub thrives in moist conditions, perfect for riparian areas or mixed borders. Its fast growth adds quick structure to landscapes.

## Ecological Benefits:

- Provides food for birds
- Pollinator Friendly
- Moderately deer resistant
- Supports riparian ecosystems

Height: 6-12 feet  
Spread: 6-10 feet



**1-Gallon Pot: \$15 | 4-inch Pot \$5 (check availability)**

15850 State Hwy 38W, Elkton, OR

[www.elktonbutterflies.com](http://www.elktonbutterflies.com) | (541) 584-2692 | [info@elktonbutterflies.com](mailto:info@elktonbutterflies.com)



# Red Flowering Currant

*(Ribes sanguineum)*



Full sun to partial shade | Well-drained, loamy soil; pH 6.0-7.5

Red Flowering Currant is a stunning native shrub that bursts into bloom with vivid pink-red flowers in early spring. Native to the Pacific Northwest, it attracts hummingbirds and bees, making it a favorite for pollinator gardens. Its edible berries are a food source for wildlife. This low-maintenance shrub is perfect for hedges or mixed borders.

## Ecological Benefits:

- Provides nectar and habitat for hummingbirds and native bees
- Pollinator Friendly
- Moderately deer resistant
- Drought tolerant once established
- Berries support birds and small mammals
- Enhances biodiversity in native landscapes



Height: 4-8 feet  
Spread: 3-6 feet



**1-Gallon Pot: \$15 | 4-inch Pot \$5 (check availability)**

15850 State Hwy 38W, Elkton, OR

[www.elktonbutterflies.com](http://www.elktonbutterflies.com) | (541) 584-2692 | [info@elktonbutterflies.com](mailto:info@elktonbutterflies.com)

# Red Osier Dogwood

(*Cornus sericea*)



Full sun to partial shade | Moist, well-drained soil; tolerates clay; pH 5.5-7.5

Red Osier Dogwood is a striking native shrub found along Pacific Northwest waterways. Its vibrant red stems provide stunning winter interest, while its white flowers and berries attract birds and pollinators. Ideal for restoration projects, this shrub thrives in wet conditions and is perfect for erosion control along streams. It's a versatile addition to any native plant landscape.

## Ecological Benefits:

- Provides habitat for native birds
- Provides nectar for bees, butterflies and hummingbirds
- Pollinator Friendly
- Moderately deer resistant
- Stabilizes soil in riparian zones



Height: 6-12 feet

Spread: 5-10 feet



**1-Gallon Pot: \$15 | 4-inch Pot \$5 (check availability)**

15850 State Hwy 38W, Elkton, OR

[www.elktonbutterflies.com](http://www.elktonbutterflies.com) | (541) 584-2692 | [info@elktonbutterflies.com](mailto:info@elktonbutterflies.com)

# Pacific Rhododendron

(*Rhododendron macrophyllum*)



Partial shade to full sun | Moist, well-drained, acidic soil; pH 4.5-6.0

Pacific Rhododendron is a showy native shrub of the Pacific Northwest, celebrated for its vibrant pink to purple flower clusters. Its evergreen foliage and stunning blooms make it a favorite for woodland gardens or restoration projects. Thriving in acidic soils, it adds year-round structure and beauty to shaded landscapes.

## Ecological Benefits:

- Provides nectar for bees and hummingbirds
- Pollinator Friendly
- Moderately deer resistant
- Supports woodland biodiversity
- Enhances shaded landscapes

Height: 6-15 feet  
Spread: 6-12 feet



**1-Gallon Pot: \$15 | 4-inch Pot \$5 (check availability)**

15850 State Hwy 38W, Elkton, OR

[www.elktonbutterflies.com](http://www.elktonbutterflies.com) | (541) 584-2692 | [info@elktonbutterflies.com](mailto:info@elktonbutterflies.com)



# Salal

(*Gaultheria shallon*)



Partial shade to full sun | Well-drained, acidic soil; pH 4.5-6.5

Salal is a robust evergreen shrub that doubles as a groundcover, native to the Pacific Northwest, known for its glossy leaves and edible dark berries. Its pink-white flowers attract pollinators, making it a staple in woodland gardens. This versatile plant thrives in shaded areas and is ideal for erosion control or understory planting. Its berries are a traditional food source for indigenous communities.

## Ecological Benefits:

- Provides food for birds and mammals
- Pollinator Friendly
- Moderately deer resistant
- Drought Tolerant once established
- Stabilizes soil in shaded areas



Height: 1-3 feet  
Spread: 3-6 feet

**1-Gallon Pot: \$15 | 4-inch Pot: \$5 (check availability)**



15850 State Hwy 38W, Elkton, OR

[www.elktonbutterflies.com](http://www.elktonbutterflies.com) | (541) 584-2692 | [info@elktonbutterflies.com](mailto:info@elktonbutterflies.com)

# Salmonberry

(*Rubus spectabilis*)



Partial shade to full sun | Moist, well-drained soil; pH 5.5-7.0

Salmonberry is a vibrant native shrub of the Pacific Northwest, known for its bright pink flowers and edible orange-red berries. Its early blooms attract hummingbirds and bees, while its berries are a food source for wildlife and humans. This shrub thrives in moist conditions, ideal for riparian areas or woodland gardens. Its spreading habit adds lushness to landscapes.

## Ecological Benefits:

- Provides food for birds and mammals
- Pollinator Friendly
- Moderately deer resistant
- Supports riparian ecosystems
- Enhances pollinator habitats with early blooms



Height: 3-10 feet

Spread: 3-8 feet

**1-Gallon Pot: \$15 | 4-inch Pot \$5 (check availability)**



15850 State Hwy 38W, Elkton, OR

[www.elktonbutterflies.com](http://www.elktonbutterflies.com) | (541) 584-2692 | [info@elktonbutterflies.com](mailto:info@elktonbutterflies.com)

# Scouler's Willow

(*Salix scouleriana*)

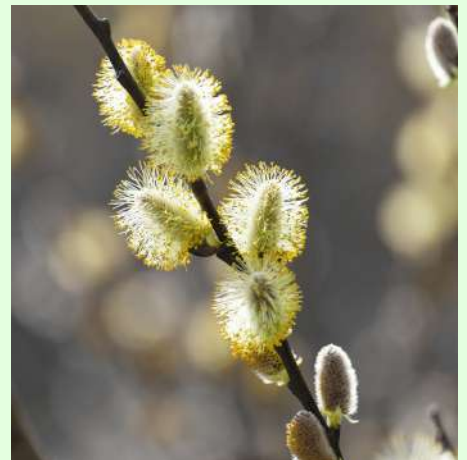


Full sun to partial shade | Moist to well-drained soil; pH 5.5-7.5

Scouler's Willow is a resilient native shrub that often grows to the height of a small tree in the Pacific Northwest. It is valued for its yellow catkins and fast growth. Its dense foliage supports wildlife, making it ideal for restoration projects or streamside plantings. Thriving in moist to well-drained soils, it adds structure and biodiversity to native landscapes.

## Ecological Benefits:

- Provides habitat for birds and small mammals
- Pollinator Friendly
- Moderately deer resistant
- Drought tolerant once established
- Supports riparian ecosystems
- Stabilizes soil along streams



Height: 6-20 feet

Spread: 6-15 feet

**1-Gallon Pot: \$15 | 4-inch Pot \$5 (check availability)**

15850 State Hwy 38W, Elkton, OR

[www.elktonbutterflies.com](http://www.elktonbutterflies.com) | (541) 584-2692 | [info@elktonbutterflies.com](mailto:info@elktonbutterflies.com)





# Serviceberry

(*Amelanchier alnifolia*)



Full sun to partial shade | Well-drained, loamy soil; pH 5.5-7.0

Serviceberry is a versatile native shrub of the Pacific Northwest, prized for its white spring flowers and sweet, edible berries. Its vibrant fall foliage adds seasonal color to gardens or restoration sites. This shrub thrives in a variety of conditions, making it ideal for hedges or wildlife gardens. Its berries are a favorite of birds and humans alike.

## Ecological Benefits:

- Provides food for birds and mammals
- Pollinator Friendly
- Moderately deer resistant
- Drought tolerant once established
- Supports woodland and garden ecosystems
- Enhances pollinator habitats with spring blooms



Height: 4-15 feet

Spread: 4-10 feet



**1-Gallon Pot: \$15 | 4-inch Pot \$5 (check availability)**

15850 State Hwy 38W, Elkton, OR

[www.elktonbutterflies.com](http://www.elktonbutterflies.com) | (541) 584-2692 | [info@elktonbutterflies.com](mailto:info@elktonbutterflies.com)

# Silver Buffaloberry

(*Shepherdia argentea*)



Full sun | Well-drained, sandy or loamy soil; pH 6.0-8.0

Silver Buffaloberry is a hardy native shrub of the Pacific Northwest, known for its silvery leaves and tart red or yellow berries. Its small yellow flowers attract pollinators, while its berries provide food for wildlife. This shrub thrives in dry, sunny conditions, ideal for xeriscaping or restoration projects. Its unique foliage adds texture to landscapes.

## Ecological Benefits:

- Provides food for birds
- Pollinator Friendly
- Moderately deer resistant
- Highly drought tolerant
- Supports dryland ecosystems
- Enhances biodiversity in sunny landscapes



Height: 6-12 feet

Spread: 6-10 feet



**1-Gallon Pot: \$15 | 4-inch Pot \$5 (check availability)**

15850 State Hwy 38W, Elkton, OR

[www.elktonbutterflies.com](http://www.elktonbutterflies.com) | (541) 584-2692 | [info@elktonbutterflies.com](mailto:info@elktonbutterflies.com)

# Snowberry

(*Symphoricarpos albus*)



Full sun to partial shade | Well-drained, loamy soil; pH 6.0-7.5

Snowberry is a charming native shrub that is also a good groundcover in the Pacific Northwest. It is prized for its clusters of white berries that persist into winter. Its small pink flowers attract pollinators, while its berries provide food for birds. This adaptable plant thrives in a variety of conditions, making it ideal for restoration projects or garden borders. Its low growth adds texture to landscapes.

## Ecological Benefits:

- Provides food for birds
- Pollinator Friendly
- Highly deer resistant
- Drought Tolerant once established
- Stabilizes soil in open or shaded areas

Height: 1-3 feet  
Spread: 3-6 feet



**1-Gallon Pot: \$15 | 4-inch Pot: \$5 (check availability)**

15850 State Hwy 38W, Elkton, OR

[www.elktonbutterflies.com](http://www.elktonbutterflies.com) | (541) 584-2692 | [info@elktonbutterflies.com](mailto:info@elktonbutterflies.com)



# Tall Oregon Grape

(*Mahonia aquifolium*)



Full sun to partial shade | Well-drained, loamy soil; pH 5.5-7.0

Tall Oregon Grape is a striking evergreen shrub native to the Pacific Northwest, known for its bright yellow flowers and blue berries. Its holly-like leaves turn bronze in fall, adding seasonal interest to gardens. This shrub thrives in a variety of conditions, ideal for hedges or woodland plantings. Its berries attract birds, enhancing local ecosystems.

## Ecological Benefits:

- Provides food for birds
- Pollinator Friendly
- Highly deer resistant
- Drought tolerant once established
- Supports woodland ecosystems
- Enhances pollinator habitats with spring blooms



Height: 3-6 feet  
Spread: 3-5 feet



**1-Gallon Pot: \$15 | 4-inch Pot \$5 (check availability)**

15850 State Hwy 38W, Elkton, OR

[www.elktonbutterflies.com](http://www.elktonbutterflies.com) | (541) 584-2692 | [info@elktonbutterflies.com](mailto:info@elktonbutterflies.com)

# Thimbleberry

(*Rubus parviflorus*)



Partial shade to full sun | Moist, well-drained, loamy soil; pH 5.5-7.0

Thimbleberry is a charming native shrub of the Pacific Northwest, known for its sprawling, low-growing habit that creates a lush, natural groundcover effect. Its large, soft leaves and delicate white flowers give way to edible red berries that attract birds and humans alike. Ideal for woodland gardens or restoration projects, this shrub thrives in shaded, moist areas. Its spreading nature makes it excellent for filling spaces or stabilizing soil.

## Ecological Benefits:

- Provides food for birds and mammals
- Pollinator Friendly, providing nectar-rich flowers
- Moderately deer resistant
- Stabilizes soil in shaded or riparian areas



Height: 2-8 feet

Spread: 3-10 feet



**1-Gallon Pot: \$15 | 4-inch Pot \$5 (check availability)**

15850 State Hwy 38W, Elkton, OR

[www.elktonbutterflies.com](http://www.elktonbutterflies.com) | (541) 584-2692 | [info@elktonbutterflies.com](mailto:info@elktonbutterflies.com)

# Twinberry

(*Lonicera involucrata*)



Full sun to partial shade | Moist, well-drained soil; pH 5.5-7.0

Twinberry is a striking native shrub of the Pacific Northwest, known for its paired yellow flowers and black berries framed by red bracts. Its blooms and berries attract hummingbirds and birds, making it ideal for wildlife gardens. This shrub thrives in moist conditions, perfect for riparian areas or mixed borders. Its unique appearance adds flair to native landscapes.

## Ecological Benefits:

- Provides food for birds and hummingbirds via berries
- Pollinator Friendly
- Moderately deer resistant
- Supports riparian ecosystems

Height: 3-10 feet  
Spread: 3-8 feet



**1-Gallon Pot: \$15 | 4-inch Pot \$5 (check availability)**

15850 State Hwy 38W, Elkton, OR

[www.elktonbutterflies.com](http://www.elktonbutterflies.com) | (541) 584-2692 | [info@elktonbutterflies.com](mailto:info@elktonbutterflies.com)





# Western Azalea

(*Rhododendron occidentale*)



Partial shade to full sun | Moist, well-drained, acidic soil; pH 4.5-6.0

Western Azalea is a stunning native shrub of the Pacific Northwest, known for its fragrant white or pink flowers with yellow markings. Its vibrant blooms attract pollinators, making it a favorite for native gardens or restoration projects. This shrub thrives in moist, acidic soils, ideal for woodland edges or mixed borders. Its deciduous foliage adds seasonal interest.

## Ecological Benefits:

- Provides nectar for bees, butterflies, and hummingbirds
- Supports pollinator populations with spring blooms
- Moderately deer resistant
- Enhances woodland and garden biodiversity



Height: 3-10 feet

Spread: 3-8 feet

**1-Gallon Pot: \$15 | 4-inch Pot \$5 (check availability)**

15850 State Hwy 38W, Elkton, OR

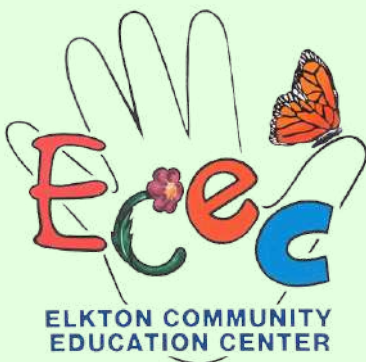
[www.elktonbutterflies.com](http://www.elktonbutterflies.com) | (541) 584-2692 | [info@elktonbutterflies.com](mailto:info@elktonbutterflies.com)



# ECEC Native Plant Catalog:

## Trees

Trees are tall, woody plants with a single main trunk, forming the canopy layer in forests and landscapes. They are crucial in environments for carbon sequestration, air purification, and soil stabilization, mitigating climate change and floods. Trees contribute to biodiversity by providing habitats for birds, mammals, and insects, creating vertical structure for diverse ecosystems. In the Pacific Northwest, they support old-growth forests, cultural resources (e.g., wood for tools), and economic value (e.g., timber or nuts), while aiding in watershed protection and wildfire management.



### **Ordering and Contact Information**

- *Phone:* (541) 584-2692
- *Visit our site:* 15850 State Hwy 38W  
Elkton, OR 97436
- *Email:* [info@elktonbutterflies.com](mailto:info@elktonbutterflies.com)
- *On the web:* [www.elktonbutterflies.com](http://www.elktonbutterflies.com)

# Big Leaf Maple

(*Acer macrophyllum*)



Full sun to partial shade | Moist, well-drained, loamy soil; pH 5.5-7.0

Big Leaf Maple is a majestic native tree of the Pacific Northwest, renowned for its massive leaves and vibrant yellow fall color. Its spring flowers and winged seeds attract pollinators and wildlife, making it ideal for large landscapes or restoration projects. This tree thrives in moist soils, perfect for riparian areas or shaded groves. Its broad canopy provides excellent shade.

## Ecological Benefits:

- Provides habitat and food for birds via seeds
- Pollinator Friendly
- Moderately deer resistant
- Moderately drought tolerant once established
- Supports forest ecosystems with shade and structure
- Enhances biodiversity in riparian areas



Height: 30-100 feet

Spread: 30-50 feet

**1-Gallon Pot: \$15 | 4-inch Pot \$5 (check availability)**

15850 State Hwy 38W, Elkton, OR

[www.elktonbutterflies.com](http://www.elktonbutterflies.com) | (541) 584-2692 | [info@elktonbutterflies.com](mailto:info@elktonbutterflies.com)





# California Black Oak

(*Quercus kelloggii*)



Full sun to partial shade | Well-drained, loamy or rocky soil; pH 5.5-7.5

California Black Oak is a stately native tree of the Pacific Northwest, known for its deeply lobed leaves and large acorns. Its vibrant fall foliage ranges from yellow to red, adding seasonal beauty to landscapes. This tree thrives in well-drained soils, ideal for open woodlands or restoration projects. Its acorns are a vital food source for wildlife.

## Ecological Benefits:

- Provides food for wildlife via acorns
- Pollinator Friendly, supporting native insects
- Moderately deer resistant
- Drought tolerant once established
- Supports oak woodland ecosystems
- Enhances biodiversity with canopy cover



Height: 30-80 feet

Spread: 20-50 feet



**1-Gallon Pot: \$15 | 4-inch Pot \$5 (check availability)**

15850 State Hwy 38W, Elkton, OR

[www.elktonbutterflies.com](http://www.elktonbutterflies.com) | (541) 584-2692 | [info@elktonbutterflies.com](mailto:info@elktonbutterflies.com)

# Douglas Fir

(*Pseudotsuga menziesii*)



Full sun to partial shade | Well-drained, loamy soil; pH 5.0-6.5

Douglas Fir is an iconic evergreen native tree of the Pacific Northwest, renowned for its soft needles and towering stature. Its cones provide food for wildlife, and its dense foliage offers habitat. Thriving in well-drained soils, it's ideal for forest restoration or large landscapes, adding majesty and ecological value.

## Ecological Benefits:

- Provides habitat and food for birds
- Highly deer resistant
- Drought tolerant once established
- Supports coniferous forest ecosystems
- Provides winter cover for wildlife



Height: 70-250 feet  
Spread: 20-50 feet

**1-Gallon Pot: \$15 | 4-inch Pot \$5 (check availability)**



15850 State Hwy 38W, Elkton, OR

[www.elktonbutterflies.com](http://www.elktonbutterflies.com) | (541) 584-2692 | [info@elktonbutterflies.com](mailto:info@elktonbutterflies.com)



# Grand Fir

(*Abies grandis*)



Full sun to partial shade | Moist, well-drained, loamy soil; pH 5.0-6.5

Grand Fir is a towering evergreen native tree of the Pacific Northwest, prized for its soft, fragrant needles and conical shape. Its cones provide food for wildlife, while its dense foliage offers excellent habitat. This tree thrives in moist soils, ideal for forest restoration or large landscapes. Its lush greenery makes it a popular choice for Christmas trees.

## Ecological Benefits:

- Provides habitat and food for birds via cones
- Supports forest biodiversity
- Highly deer resistant
- Supports coniferous forest ecosystems
- Provides winter cover for wildlife

Height: 80-200 feet  
Spread: 20-40 feet



**1-Gallon Pot: \$15 | 4-inch Pot \$5 (check availability)**

15850 State Hwy 38W, Elkton, OR

[www.elktonbutterflies.com](http://www.elktonbutterflies.com) | (541) 584-2692 | [info@elktonbutterflies.com](mailto:info@elktonbutterflies.com)



# Incense Cedar

(*Calocedrus decurrens*)



Full sun to partial shade | Well-drained, loamy or sandy soil; pH 5.5-7.0

Incense Cedar is an aromatic evergreen native tree of the Pacific Northwest, known for its scale-like leaves and reddish-brown bark. Its small cones attract wildlife, and its dense foliage provides excellent cover. This tree thrives in well-drained soils, ideal for restoration projects or large landscapes. Its spicy fragrance adds charm to native plantings.

## Ecological Benefits:

- Provides habitat for birds and small mammals
- Supports forest biodiversity
- Highly deer resistant
- Drought tolerant once established
- Supports coniferous forest ecosystems
- Provides winter cover for wildlife



Height: 50-150 feet  
Spread: 15-30 feet

**1-Gallon Pot: \$15 | 4-inch Pot \$5 (check availability)**



15850 State Hwy 38W, Elkton, OR

[www.elktonbutterflies.com](http://www.elktonbutterflies.com) | (541) 584-2692 | [info@elktonbutterflies.com](mailto:info@elktonbutterflies.com)

# Noble Fir

(*Abies procera*)



Full sun to partial shade | Moist, well-drained, acidic soil; pH 5.0-6.5

Noble Fir is a stately evergreen native tree of the Pacific Northwest, prized for its blue-green needles and symmetrical form. Its upright cones attract wildlife, and its dense foliage makes it a popular Christmas tree. Thriving in moist soils, it's ideal for forest restoration or ornamental landscapes.

## Ecological Benefits:

- Provides habitat and food for birds
- Highly deer resistant
- Supports coniferous forest ecosystems and forest biodiversity
- Provides winter cover for wildlife

Height: 50-200 feet  
Spread: 20-40 feet



**1-Gallon Pot: \$15 | 4-inch Pot \$5 (check availability)**

15850 State Hwy 38W, Elkton, OR

[www.elktonbutterflies.com](http://www.elktonbutterflies.com) | (541) 584-2692 | [info@elktonbutterflies.com](mailto:info@elktonbutterflies.com)

# Oregon Myrtle

(*Umbellularia californica*)



Full sun to partial shade | Well-drained, loamy soil; pH 5.5-7.0

Oregon Myrtle, also known as California Bay Laurel, is a majestic native tree of the Pacific Northwest, prized for its aromatic evergreen leaves and attractive form. Its small yellow flowers and dark fruits attract wildlife, while its dense canopy provides shade. Ideal for large landscapes or restoration projects, this tree adds beauty and ecological value. Its leaves are used as a culinary bay leaf substitute.

## Ecological Benefits:

- Provides habitat and food for birds and small mammals
- Pollinator Friendly
- Moderately deer resistant
- Drought tolerant once established
- Supports forest biodiversity with dense foliage
- Stabilizes soil in wooded or riparian areas



Height: 20-80 feet

Spread: 20-50 feet

**1-Gallon Pot: \$15 | 4-inch Pot \$5 (check availability)**

15850 State Hwy 38W, Elkton, OR

[www.elktonbutterflies.com](http://www.elktonbutterflies.com) | (541) 584-2692 | [info@elktonbutterflies.com](mailto:info@elktonbutterflies.com)





# Oregon Ash

(*Fraxinus latifolia*)



Full sun to partial shade | Moist, well-drained soil; tolerates clay; pH 5.5-7.5

Oregon Ash is a sturdy native tree of the Pacific Northwest, known for its compound leaves and winged seeds. Its broad canopy provides excellent shade, making it ideal for riparian areas or large landscapes. This tree thrives in wet soils, perfect for restoration projects along streams or wetlands. Its fall foliage adds a golden hue to autumn landscapes.

## Ecological Benefits:

- Provides habitat for birds via seeds and canopy
- Pollinator Friendly, supporting native insects
- Moderately deer resistant
- Supports riparian ecosystems
- Stabilizes soil in wetland areas



Height: 40-80 feet  
Spread: 30-50 feet

**1-Gallon Pot: \$15 | 4-inch Pot \$5 (check availability)**

15850 State Hwy 38W, Elkton, OR

[www.elktonbutterflies.com](http://www.elktonbutterflies.com) | (541) 584-2692 | [info@elktonbutterflies.com](mailto:info@elktonbutterflies.com)



# Oregon White Oak

(*Quercus garryana*)



Full sun to partial shade | Well-drained, loamy or rocky soil; pH 5.5-7.5

Oregon White Oak is an iconic native tree of the Pacific Northwest, valued for its gnarled branches, lobed leaves, and large acorns. Its broad canopy and vibrant fall color make it a centerpiece for landscapes or restoration projects. This tree thrives in well-drained soils, ideal for oak savannas or open woodlands. Its acorns are a critical food source for wildlife.

## Ecological Benefits:

- Provides food for wildlife via acorns
- Pollinator Friendly, supporting native insects
- Moderately deer resistant
- Drought tolerant once established
- Supports oak savanna ecosystems
- Enhances biodiversity with canopy cover



Height: 40-80 feet  
Spread: 30-60 feet

**1-Gallon Pot: \$15 | 4-inch Pot \$5 (check availability)**

15850 State Hwy 38W, Elkton, OR

[www.elktonbutterflies.com](http://www.elktonbutterflies.com) | (541) 584-2692 | [info@elktonbutterflies.com](mailto:info@elktonbutterflies.com)



# Pacific Crab Apple

(*Malus fusca*)



Full sun to partial shade | Moist, well-drained soil; pH 5.5-7.0

Pacific Crab Apple is a charming native tree of the Pacific Northwest, valued for its white spring flowers and small, edible yellow-red apples. Its fruit attracts wildlife and can be used for jellies. Ideal for orchards or restoration projects, it thrives in moist soils, adding beauty and ecological value.

## Ecological Benefits:

- Provides food for birds and mammals
- Pollinator Friendly
- Moderately deer resistant
- Supports woodland and riparian ecosystems
- Enhances biodiversity with edible fruit



Height: 15-40 feet  
Spread: 10-30 feet



**1-Gallon Pot: \$15 | 4-inch Pot \$5 (check availability)**

15850 State Hwy 38W, Elkton, OR

[www.elktonbutterflies.com](http://www.elktonbutterflies.com) | (541) 584-2692 | [info@elktonbutterflies.com](mailto:info@elktonbutterflies.com)



# Pacific Dogwood

(*Cornus nuttallii*)



Partial shade to full sun | Moist, well-drained, acidic soil; pH 5.0-6.5

Pacific Dogwood is a graceful native tree of the Pacific Northwest, celebrated for its showy white flower bracts and vibrant red berries. Its stunning spring blooms and fall color make it a favorite for ornamental landscapes or restoration projects. This tree thrives in moist, shaded areas, ideal for woodland edges. Its berries attract birds, enhancing local ecosystems.

## Ecological Benefits:

- Provides food for birds via berries
- Pollinator Friendly
- Moderately deer resistant
- Supports woodland ecosystems
- Enhances biodiversity with spring blooms



Height: 20-50 feet  
Spread: 15-30 feet

**1-Gallon Pot: \$15 | 4-inch Pot \$5 (check availability)**

15850 State Hwy 38W, Elkton, OR

[www.elktonbutterflies.com](http://www.elktonbutterflies.com) | (541) 584-2692 | [info@elktonbutterflies.com](mailto:info@elktonbutterflies.com)



# Paper Birch

(*Betula papyrifera*)



Full sun to partial shade | Moist, well-drained soil; pH 5.0-7.0

Paper Birch is a striking native tree of the Pacific Northwest, known for its white peeling bark and golden fall foliage. Its catkins provide food for wildlife, making it ideal for woodland or riparian restoration. Thriving in moist soils, it adds elegance and ecological value to landscapes.

## Ecological Benefits:

- Provides food for birds
- Pollinator Friendly, supporting native insects
- Moderately deer resistant
- Prefers moist conditions
- Supports woodland and riparian ecosystems
- Enhances biodiversity



Height: 40-70 feet  
Spread: 20-40 feet

**1-Gallon Pot: \$15 | 4-inch Pot \$5 (check availability)**

15850 State Hwy 38W, Elkton, OR

[www.elktonbutterflies.com](http://www.elktonbutterflies.com) | (541) 584-2692 | [info@elktonbutterflies.com](mailto:info@elktonbutterflies.com)



# Ponderosa Pine

(*Pinus ponderosa*)



Full sun | Well-drained, sandy or loamy soil; pH 6.0-7.5

Ponderosa Pine is a towering evergreen native tree of the Pacific Northwest, known for its long needles and distinctive reddish bark. Its large cones provide food for wildlife, while its tall stature adds majesty to landscapes. This tree thrives in sunny, dry conditions, ideal for restoration projects or open woodlands. Its vanilla-scented bark is a unique feature.

## Ecological Benefits:

- Provides habitat and food for birds via cones
- Supports forest biodiversity
- Highly deer resistant
- Drought tolerant once established
- Supports coniferous forest ecosystems
- Provides winter cover for wildlife



Height: 60-150 feet

Spread: 25-40 feet

**1-Gallon Pot: \$15 | 4-inch Pot \$5 (check availability)**

15850 State Hwy 38W, Elkton, OR

[www.elktonbutterflies.com](http://www.elktonbutterflies.com) | (541) 584-2692 | [info@elktonbutterflies.com](mailto:info@elktonbutterflies.com)





# Quaking Aspen

(*Populus tremuloides*)



Full sun | Moist, well-drained soil; pH 5.5-7.0

Quaking Aspen is a graceful native tree of the Pacific Northwest, famous for its trembling leaves and vibrant yellow fall color. Its spreading root system forms colonies, ideal for restoration projects or open woodlands. Thriving in sunny, moist soils, it adds dynamic beauty and ecological benefits to landscapes.

## Ecological Benefits:

- Provides habitat for birds and mammals
- Pollinator Friendly, supporting native insects
- Moderately deer resistant
- Prefers moist conditions
- Supports woodland ecosystems
- Enhances biodiversity with clonal growth



Height: 20-80 feet  
Spread: 10-30 feet

**1-Gallon Pot: \$15 | 4-inch Pot \$5 (check availability)**

15850 State Hwy 38W, Elkton, OR

[www.elktonbutterflies.com](http://www.elktonbutterflies.com) | (541) 584-2692 | [info@elktonbutterflies.com](mailto:info@elktonbutterflies.com)



# Sitka Alder

(*Alnus viridis ssp. sinuata*)



Full sun to partial shade | Moist, well-drained soil; tolerates wet conditions; pH 5.0-7.0

Sitka Alder is a fast-growing native tree of the Pacific Northwest, known for its green leaves and nitrogen-fixing roots. Ideal for riparian restoration, it stabilizes soil and supports wildlife. Thriving in moist environments, it's perfect for streambanks or wetland landscapes, adding ecological value and resilience.

## Ecological Benefits:

- Fixes nitrogen to improve soil fertility
- Pollinator Friendly, supporting native insects
- Moderately deer resistant
- Supports riparian ecosystems
- Stabilizes soil in wet areas



Height: 15-40 feet

Spread: 10-25 feet

**1-Gallon Pot: \$15 | 4-inch Pot \$5 (check availability)**

15850 State Hwy 38W, Elkton, OR

[www.elktonbutterflies.com](http://www.elktonbutterflies.com) | (541) 584-2692 | [info@elktonbutterflies.com](mailto:info@elktonbutterflies.com)



# Vine Maple

(*Acer circinatum*)



Partial shade to full sun | Moist, well-drained, loamy soil; pH 5.5-7.0

Vine Maple is a versatile native shrub or small tree of the Pacific Northwest, celebrated for its brilliant red or yellow fall foliage. Its delicate branches and winged seeds add grace to woodland gardens or restoration projects. This plant thrives in shaded or sunny areas, ideal for understory planting or mixed borders. Its multi-stemmed form adds elegance to wild landscapes, though it is often trained into a small graceful tree in home gardens.

## Ecological Benefits:

- Provides cover and food for birds via seeds
- Pollinator Friendly
- Moderately deer resistant
- Moderately drought tolerant
- Supports woodland ecosystems
- Enhances fall color in native landscapes



Height: 10-25 feet  
Spread: 10-20 feet

**1-Gallon Pot: \$15 | 4-inch Pot \$5 (check availability)**

15850 State Hwy 38W, Elkton, OR

[www.elktonbutterflies.com](http://www.elktonbutterflies.com) | (541) 584-2692 | [info@elktonbutterflies.com](mailto:info@elktonbutterflies.com)





# Water Birch

(*Betula occidentalis*)



Full sun to partial shade | Moist, well-drained soil; tolerates wet conditions; pH 5.0-7.0

Water Birch is a slender native tree of the Pacific Northwest, known for its shiny leaves and reddish-brown bark. Its catkins provide food for wildlife, making it ideal for riparian restoration or wetland landscapes. Thriving in moist soils, it adds elegance and ecological benefits to streamside plantings.

## Ecological Benefits:

- Provides food for birds
- Pollinator Friendly, supporting native insects
- Moderately deer resistant
- Prefers moist conditions
- Supports riparian ecosystems
- Stabilizes soil along streams

Height: 20-40 feet  
Spread: 15-30 feet



**1-Gallon Pot: \$15 | 4-inch Pot \$5 (check availability)**

15850 State Hwy 38W, Elkton, OR

[www.elktonbutterflies.com](http://www.elktonbutterflies.com) | (541) 584-2692 | [info@elktonbutterflies.com](mailto:info@elktonbutterflies.com)



# Western Red Cedar

*(Thuja plicata)*



Full sun to partial shade | Moist, well-drained soil; pH 5.0-7.0

Western Red Cedar is a majestic evergreen native tree of the Pacific Northwest, revered for its aromatic, scale-like leaves and durable wood. Its dense foliage provides excellent wildlife cover, making it ideal for forest restoration or large landscapes. Thriving in moist soils, it adds cultural and ecological significance.

## Ecological Benefits:

- Provides habitat for birds and mammals
- Highly deer resistant
- Prefers moist conditions
- Supports coniferous forest ecosystems and forest biodiversity
- Provides winter cover for wildlife



Height: 50-200 feet

Spread: 20-60 feet



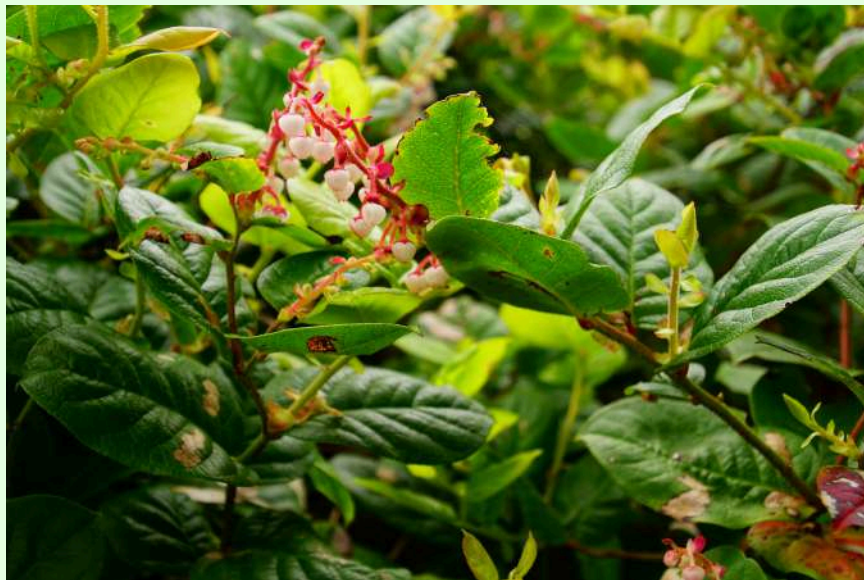
**1-Gallon Pot: \$15 | 4-inch Pot \$5 (check availability)**

15850 State Hwy 38W, Elkton, OR

[www.elktonbutterflies.com](http://www.elktonbutterflies.com) | (541) 584-2692 | [info@elktonbutterflies.com](mailto:info@elktonbutterflies.com)

# Explore Native Plants with ECEC

Discover the beauty and ecological benefits of Pacific Northwest native plants with the Elkton Community Education Center. Our catalog showcases a diverse selection of groundcovers, milkweed, shrubs, and trees, perfect for sustainable landscaping, restoration projects, or wildlife gardens. Support local ecosystems and connect with nature through our native plant offerings.



Elkton Community Education Center  
15850 State Hwy 38W  
Elkton, OR 97436  
(541) 584-2692  
[info@elktonbutterflies.com](mailto:info@elktonbutterflies.com)